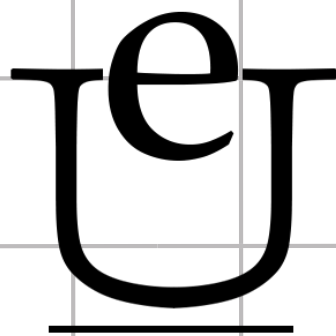
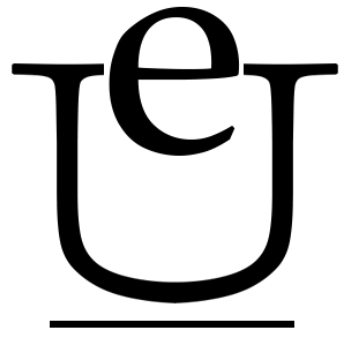


# HOW TO MEASURE YOUR SPACE



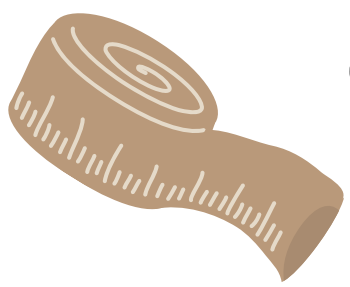


# HOW TO MEASURE YOUR SPACE



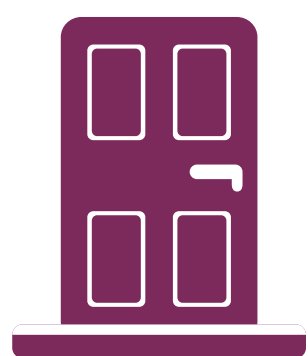
## SKETCH THE ROOM

Roughly sketch your room noting where the windows, doors, and fixed furniture pieces are located. This does not need to be pretty or to scale, the measurements just need to be accurate.



## GET YOUR TAPE MEASURE

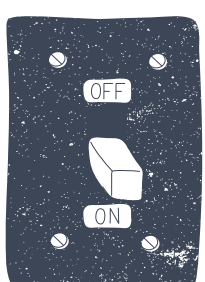
The longer the tape measure, the better. Ideally, 25' is the minimum yours should go so you can measure a whole room easily.



## WALLS, WINDOWS, & DOORS

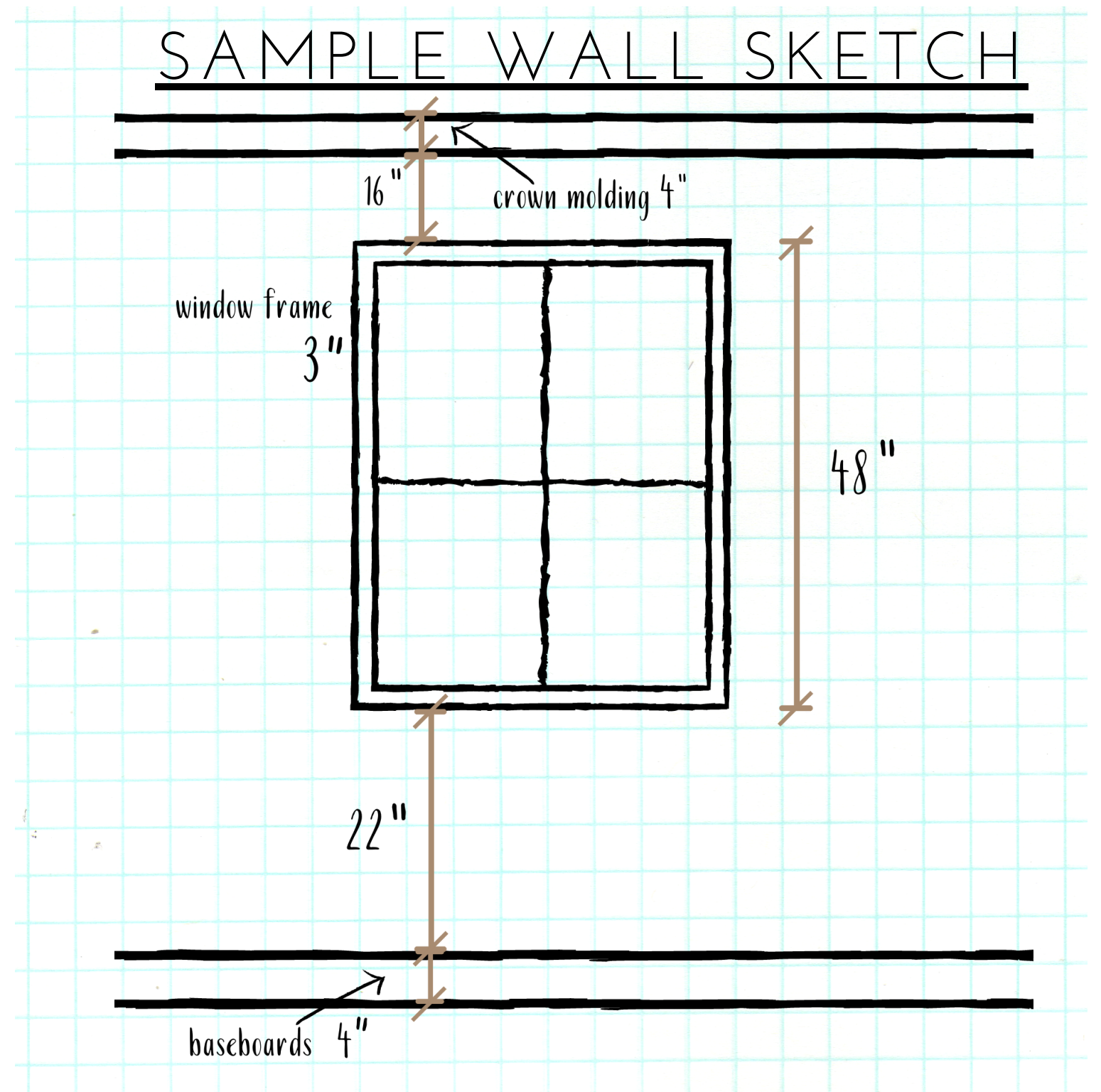
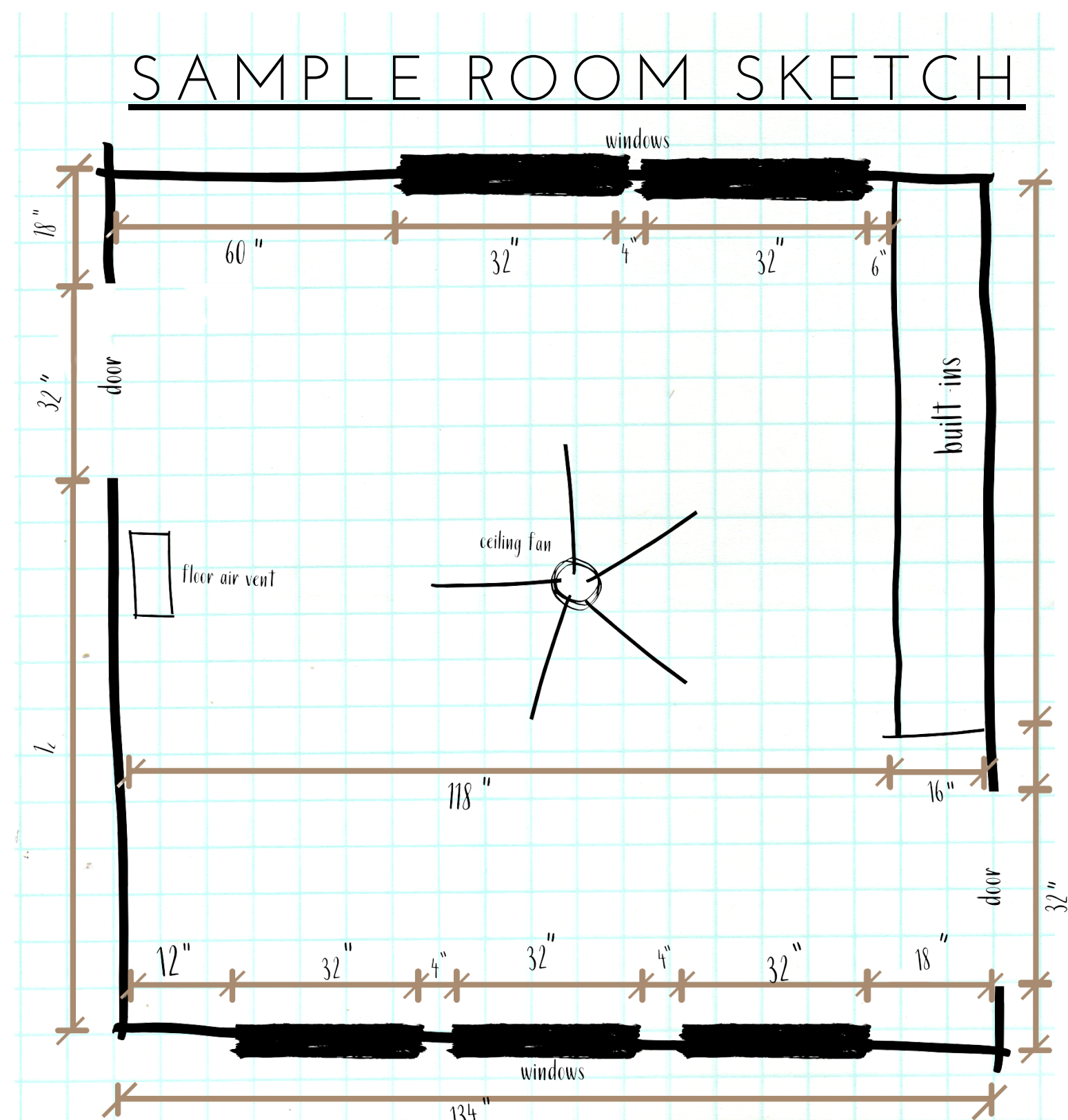
First, measure the general length and width of the room with the walls. Then measure doors, windows, and anything built-in. These dimensions should include their distance from the floor and ceiling.

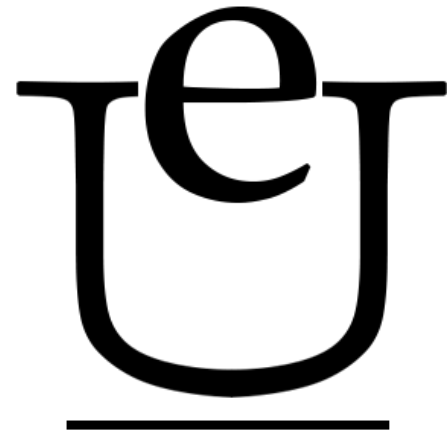
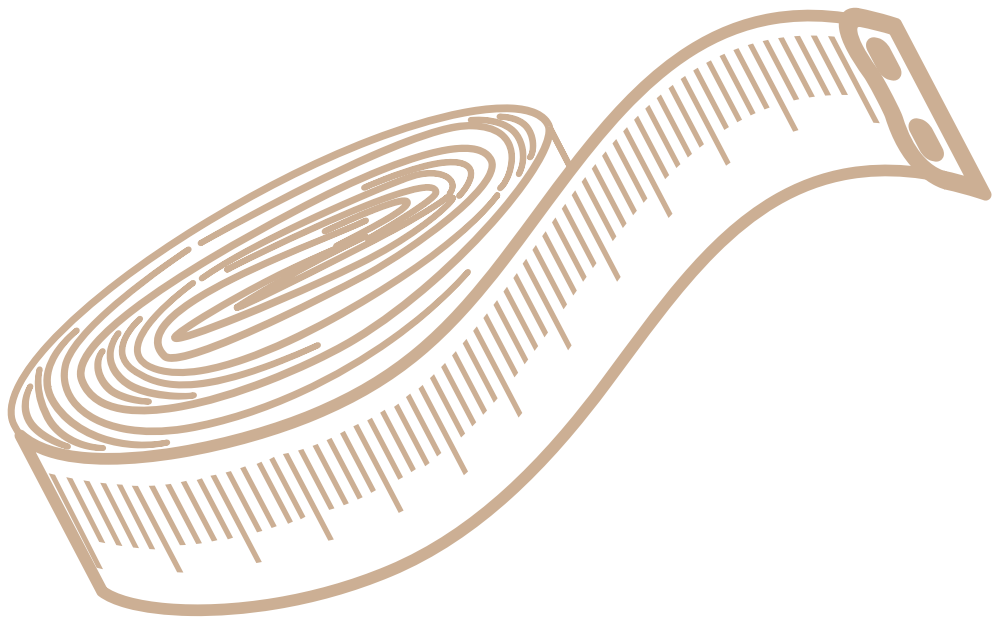
SEE SAMPLE WALL SKETCH



## DETAILS

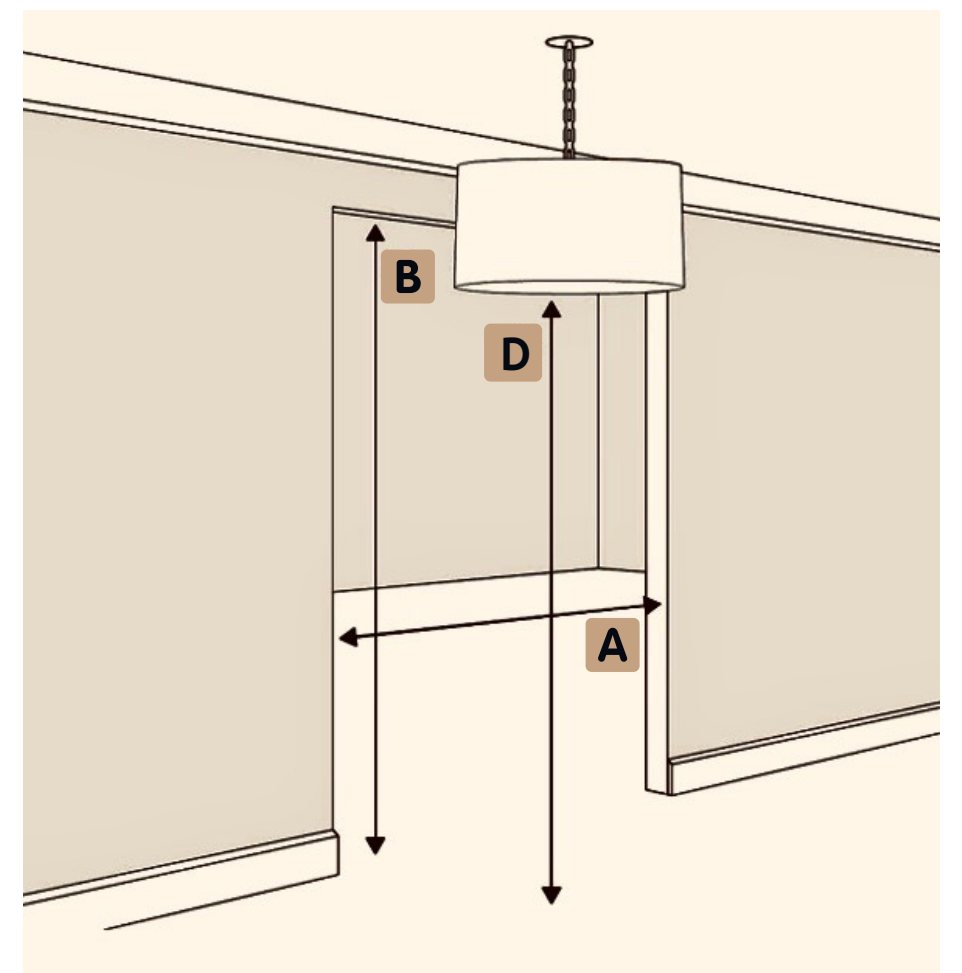
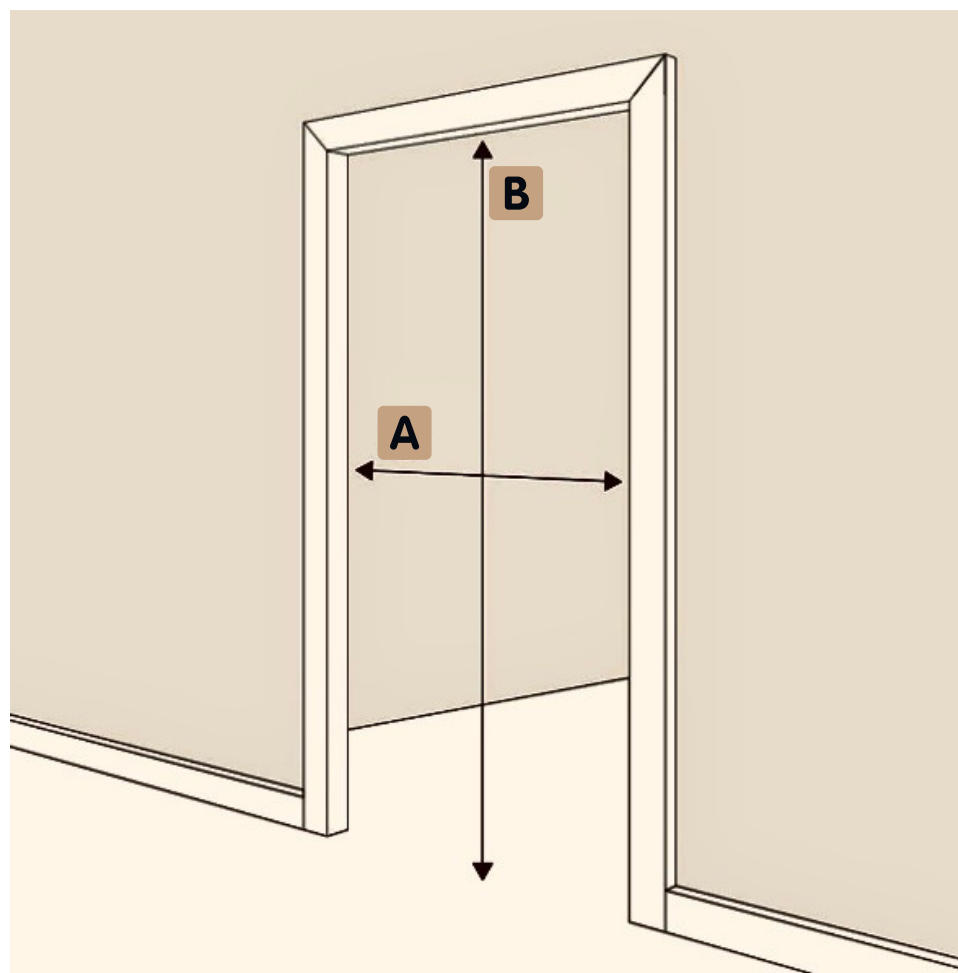
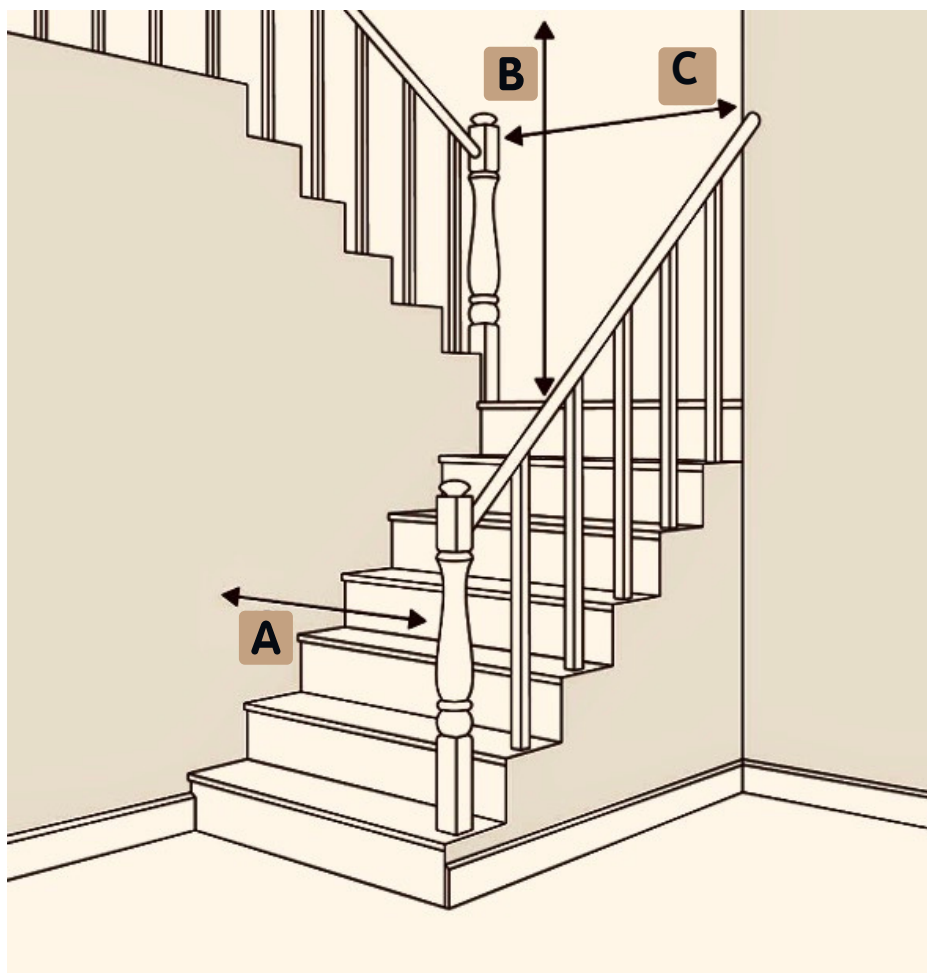
Measure and note locations of, and distance between, outlets, light switches, thermostats, air vents/returns, baseboards, crown molding, light fixtures, etc.





# THE "WILL IT FIT?" GUIDE

Doorways are especially important so we can ensure furniture fits into your home. After we have made our selections, please measure all the spaces that the furniture must pass through to get to the room.



- WHEN MEASURING DOORWAYS, BE SURE TO MEASURE THE **A** WIDTH AND **B** HEIGHT INSIDE YOUR DOOR FRAME. IF YOUR DOOR DOES NOT OPEN WIDE ENOUGH, YOU MAY WANT TO HAVE IT REMOVED FROM ITS HINGES PRIOR TO DELIVERY.
- IN STAIRWELLS, BE SURE TO TAKE **C** HANDRAILS OR POSTS INTO CONSIDERATION.
- FOR HALLWAYS, CHECK FOR **D** LOW-HANGING LIGHT FIXTURES OR ARCHITECTURAL DETAILS THAT CAN IMPEDE YOUR DELIVERY.

IF AN ELEVATOR IS REQUIRED TO REACH YOUR APARTMENT OR CONDOMINIUM, YOU WILL NEED TO MEASURE THE ELEVATOR DOORWAY AND INTERIOR.

## IMPORTANT NOTE

Many companies will not accept returns because it doesn't fit in the home, let's be sure we know it will fit before ordering!

